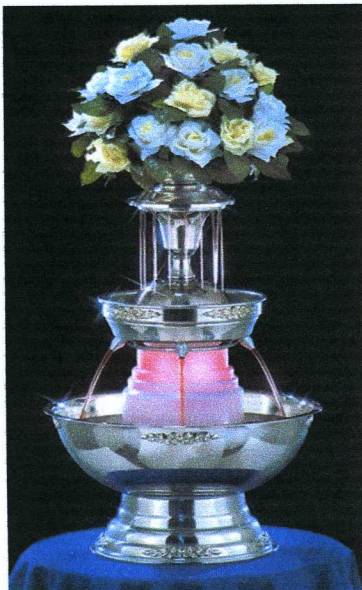
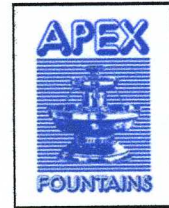




You invite the guests, We'll Supply the Rest!TM

Champagne (Beverage) Fountain Rentals



This beautiful 3 Gallon Champagne (Beverage) Fountain will be the hit of any affair. Weddings, Black Tie Parties, Showers, Fundraisers, New Years Eve Parties and more! Use the popular Champagne beverage or try some of our punch recipes on the next page.

This Fountain is Lighted at the core and rents for...

\$70.00

3 Gallon Fountain Serves 75 to 100 Guests

A 30% Non-Refundable Reservation Fee is due upon placing your request. The balance of your rental order is to be paid at our store the day of pick-up or 7 days prior to a scheduled delivery. No payments are made to delivery drivers.



This 5 Gallon Champagne (Beverage) Fountain is lighted at the core and has tube lights that surround the top and bottom of the bowl. Have your florist make an arrangement of flowers to match your parties color scheme for the floral bowl on top or fill with fresh fruit.

This Lighted Fountain rents for...

\$80.00

5 Gallon Fountain Serves 100 to 150 Guests

Important extras to order!

- Plastic Champagne Glasses 4 Ounce 20ct....\$5.99
- Plastic Champagne Glasses 4 Ounce 50ct....\$13.99
- Plastic Champagne Flutes 5 Ounce 10ct....\$8.99
- Plastic Newbury Fancy 5 Ounce Flutes 10ct....\$9.29
- Plastic Punch Cups Clear 9 Oz 20ct....\$ 2.79
- Plastic Punch Cups Clear 5 Oz 50ct....\$ 5.99



-APEX FOUNTAINS-

Quality Champagne Fountains since 1947

Important Note: NEVER RUN FOUNTAIN DRY OR IMMERSE THE BASE IN WATER!!!! IF BEVERAGE RUNS TO LOW TURN OFF MOTOR!

To operate Champagne Fountain

- 1) Place on a sturdy, level surface and pour a minimum of six quarts for a three galloon or ten quarts for a five gallon machine of pre-chilled beverage into the lower reservoir. NEVER USE BEVERAGE WITH PULP. NOTE the machine does not chill the beverage so you must pre-chill. If you need to chill the beverage during the service you may use ice in the main bowl, dry ice or acrylic ice cubes.
- 2) Plug fountain into an outlet, please do not use extension cords. The lights will come on automatically.
- 3) Turn the control switch to "ON", the beverage will flow.
- 4) When you are finished with the fountain. Switch the control switch to "OFF" and unplug.
- 5) Empty the remaining beverage. Fill with WARM water. Turn on Fountain and let it run for A minimum of 10 Minutes. Empty water from the bowl.
- 6) Wipe down the machine with WATER ONLY! WE WILL FINISH CLEANING.

RECIPES

Wedding Punch

- 2 Fifths Southern Comfort or Bourbon
- Juice of 12 Lemons (strained) 12 oz.
- 1 Cup Sugar
- 1 Pint Very Strong Tea
- 2 Bottles Club Soda 56 Oz.

Mix thoroughly. Pour over large piece of ice, adding soda last. Decorate with fruit.

Non-Alcoholic Punch

- 2 Cans (12 Oz) Frozen Orange Juice
- 2 Cans (12 Oz) Frozen Lemonade
- 8 Bottles (12 Oz) Plain Water
- 2 Cups Grenadine
- Juice of 3 Lemons (strained)
- 3 Qt. Ginger Ale (Chilled)

Float orange slices on top. Add cherries.

Champagne Punch

- 1/3 Part Chablis
- 1/3 Part Champagne
- 1/3 Part Ginger Ale or Sprite Chilled

Ice Cubes to Chill.

Honolulu Cooler

- 1 Gallon Pineapple Juice
- 6 Oz. Lime Juice
- 2 Bottles of Vodka
- 2 Bottles 7 Up
- 1 Bottle Brandy
- 1 Bottle Soda

Add Ice Cubes to chill & decorate with fruit.



940-384-PRTY