

Cotton Candy Machine Rentals



Deluxe Cart & Machine



Basic Cart & Machine



Machine & Bubble Only



You invite the guests, We'll Supply the Rest!™ 940-384-PR T Y

We have three ways you can rent our Cotton Candy Machines .

RENTAL for the Machine including the Floss Bubble ... \$85.00

This includes Supplies for 50 Servings
(You will get 1 Carton of Floss and 2/25ct Cotton Candy Cones)

ADD FOR BASIC CART ...\$15.00

ADD FOR DELUXE CART ...\$25.00

A 30% Non-Refundable Reservation Fee is due upon placing your request. The balance of your rental order is to be paid at our store the day of pick-up or 7 days prior to a scheduled delivery. No payments are made to delivery drivers. Rentals are based on two days, you pick the items up the day before your event and bring them back the day after. If you need the rental for more than this term, please ask for long term rates.

Additional Supplies

FLOSS SUGAR ½ GAL CARTON - \$9.99

Flavors we have in stock are Silly Nilly-Vanilla Pink, Cherry Berry-Cherry, Spooky Fruity-Grape & Boo Blue-Blue Raspberry.

Each 3# (1/2 Gal) Carton will make approximately 50-70 Cones

COTTON CANDY CONES (White) 25CT - \$1.50

COTTON CANDY BAGS (Clear w/Tie) 25CT - \$3.00



My fondest memories as a child were smushing my face in a pillow of cotton candy! Easy to make, try some at your next event make some memories!!
Fun Food for Fun Times!



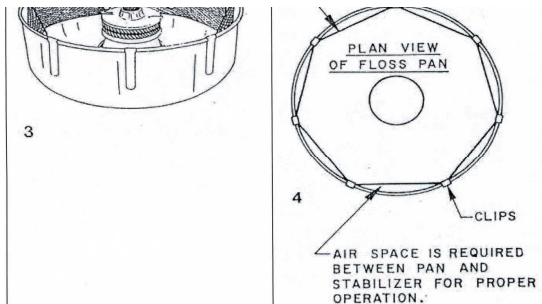
COTTON CANDY MACHINE INSTRUCTIONS

Color: Pink & Stainless Four Pieces Cart, Motor, Bowl, Bubble plus Supplies
 Transporting: Large vehicle or pickup truck, secure with rope. Heavy.



SETTING UP THE MACHINE

Put Motor on Cart/Table and lock down. Place Floss Bowl centered on Motor.
 Install the Whirl Grip Floss Stabilizer with supplied dips see below.
 Place Bubble on Floss Bowl.



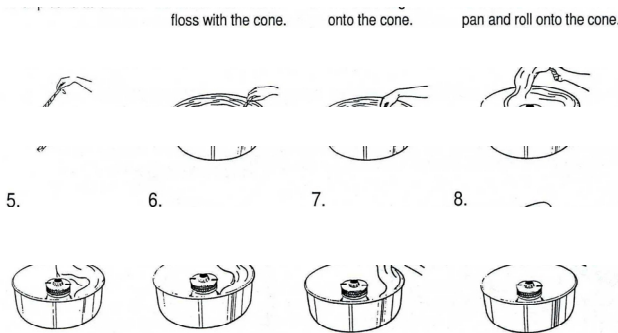
CONTROLS & FUNCTIONS

POWER SWITCH Supplies power to the machine without turning on any components. Also acts as a Master on/off switch. **USE A DEDICATED CIRCUIT NO EXTENSION C**

CANDY SWITCH Turns motor and heat cycle on. Turning this switch off when finished making cotton candy allows the machine to start its cooling cycle.

OPERATING INSTRUCTIONS

- 1) With **CANDY SWITCH** turn the **POWER SWITCH**. The spinner head will not start to rotate.
- 2) With the spinner head **stop** put sugar into the spinner head. Fill to about the 90% level, **DO NOT OVER-FILL!**
- 3) Turn the **CANDY SWITCH** on. The spinner head will rotate and heat, after about 45 seconds the machine will start to make cotton candy. (See making floss below)
- 4) When the spinner head is empty, or to stop making cotton candy, turn the **CANDY SWITCH** off. The cooling cycle will start. When the cooling cycle completes, the spinner head will stop rotating. When the spinner head is stopped; re-fill with sugar, turn the **CANDY SWITCH** on, and continue to make cotton candy **NEVER FILL SPIN HEAD WHILE IT IS SPINNING!!!!**



- DO NOT PUT HANDS OR OBJECTS IN ROTATING SPINNER HEAD.
- DO NOT FILL SPINNER HEAD WITH SUGAR WHILE IT IS ROTATING.

- USE FLOSS CONE TO COLLECT COTTON CANDY.

MAKING FLOSS

Pick a cone; if it sticks in the stack of cones, twist it off the stack.

Hold an inch or two of the pointed end of the cone between two fingers and a thumb. With a light flicking action, roll cone in the web of floss building up in the pan. Lift the cone up with the ring of floss attached and rotate the cone to wrap the floss. **DO NOT** roll floss while the cone is inside the pan. This will pack the floss too tightly.

If the floss fails to stick to the cone, pass the cone near the spinner head to pick up a starter of melted sugar. Lift the cone out of the pan and wrap the floss with a figure eight movement of the hand. This leaves giant pockets and makes the final product appear larger. Make sure room humidity is not too high, or product will be heavy.



After you have finished with the machine please run all sugar out of the motor. Take stabilizer off and wash with water. Wipe down machine with supplied towel and **WATER only!**
WE WILL FINISH CLEANING THE MACHINE

940-384-PR T Y